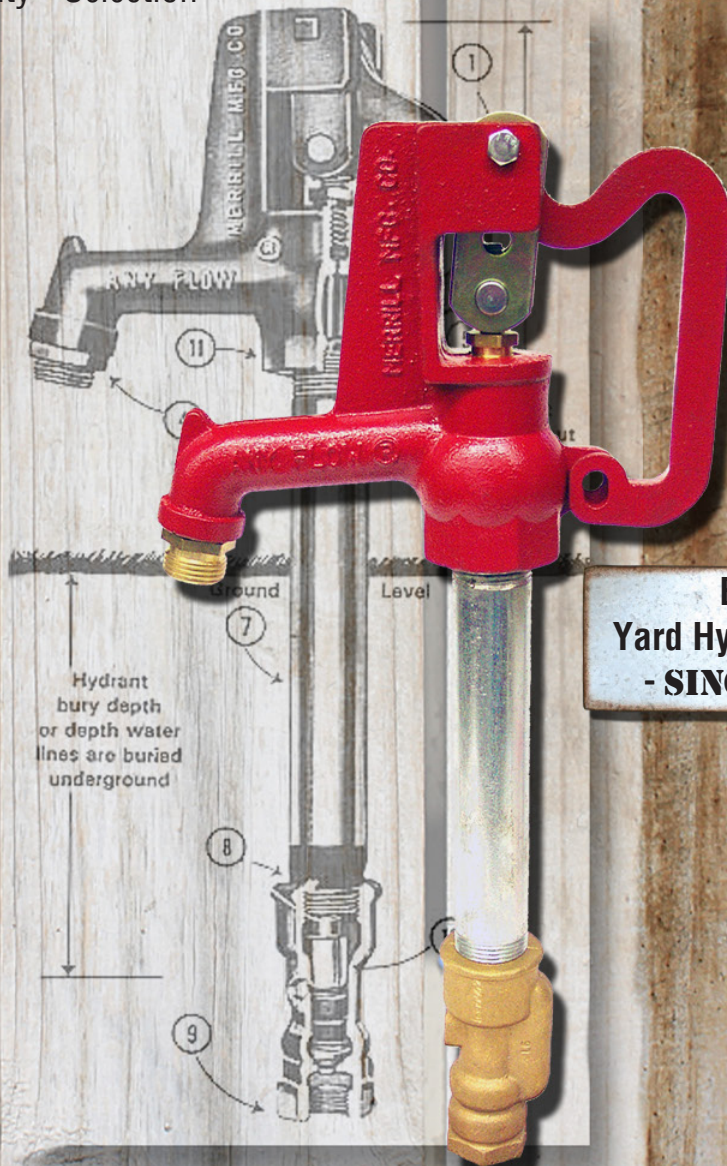


# MERRILL

Known for  
Service - Quality - Selection

**2016**  
2nd Edition

**OVER  
3,000  
NO LEAD  
ITEMS**



**BEST  
Yard Hydrant Made  
- SINCE 1949 -**

**MERRILL  
MANUFACTURING CO.**

315 Flindt Drive  
P.O. Box 392  
Storm Lake, IA 50588-0392

1-800-831-6962  
[www.merrillmfg.com](http://www.merrillmfg.com)



**PROUDLY MADE IN THE USA**

**MERRILL**  
MFG. TM

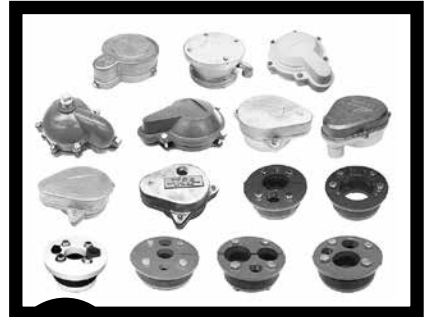




**1** Frost Proof Yard Hydrants  
Pages 8-38



**2** Pitless Units, Kits, Adapters  
Pages 39-61



**3** Well Caps, Well Seals  
Pages 62-66



**4** Floats, Air Volume Controls  
Pages 67-70



**5** Tank Tees, Tee Kits, Tee Acc.  
Pages 71-88



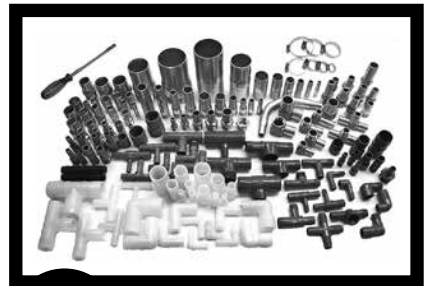
**6** Pressure Switches & Gauges  
Pages 89-96



**7** Splice Kits, Torque Arrestors,  
Couplings Pages 97-105



**8** Well Points, Pump Rod,  
Cup Leathers Pages 106-114



**9** Insert Fittings & Clamps  
Pages 115-129



**10** Frost Proof Wall Faucets  
Pages 130-131



**11** Check & Foot Valves  
Pages 132-143

❖ CA. Certified

## MF SERIES & MA25 SERIES (Quarter Turn Wall Faucets)

### SELF-DRAINING Frost Proof Wall Faucet

Merrill MF Series Frost Proof Wall Faucets provide frost proof supply when installed through a house or building wall.

#### MF Series

Order No.	UPC Bar Code (Qty. 1)	Length	Approx. Wt./Lbs.	Ctn. Qty.	Approx. Ctn. Wt./Lbs.
-----------	-----------------------	--------	------------------	-----------	-----------------------

❖ \*MFD6 6 42367 03609 9 6" 1.1 24 27.0

\* Limited Quantity

#### MF Series Parts List

Part No.	UPC Bar Code (Qty. 1)	Description
MADW	6 42367 01790 3	Beveled Wedge
MAS01	6 42367 09980 0	Handle Screw
MAS02	6 42367 09981 7	Handle Washer
MAS03	6 42367 09982 4	Handle
MAS04	6 42367 09984 8	Bonnet Nut
MAS05	6 42367 09985 5	Packing Washer
MAS06	6 42367 09986 2	Packing
MAS07	6 42367 09987 9	Flat Washer
MAS10	6 42367 09989 3	Spring
MAS11	6 42367 09990 9	O-Ring
MAS12	6 42367 09991 6	Brass Seat
MAS13	6 42367 09992 3	Seat Packing
MAS14	6 42367 09993 0	Seat Washer
MAS15	6 42367 09994 7	Bibb Washer
MAS16	6 42367 09995 4	Bibb Washer Screw

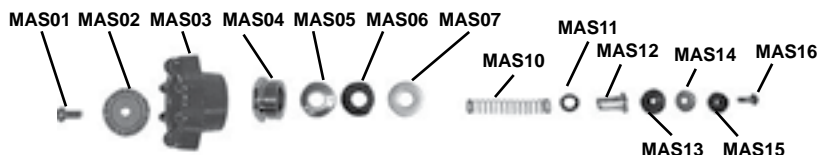


Optional No Lead Brass Vacuum Breaker  
Order No. BVBADNL75

**NOTE:** Wall faucet must be installed with downward slope from inlet to outlet to drain and hose must not have shutoff valve on end or must be removed, so faucet can drain completely.



MADW Beveled Wedge

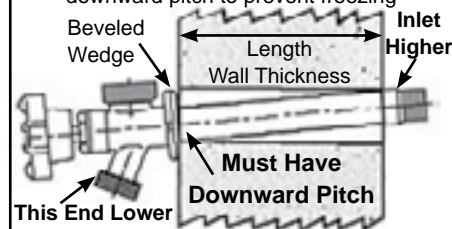


### FEATURES/BENEFITS

- (1) **Heavy-Duty Model** - extra heavy brass stem with stainless steel to back up packing washer.
- (2) **Adjustable Packing Nut** - with rubber packing, instead of asbestos packing used by other companies.
- (3) **Metal Handle** - for strength and long life.
- (4) **Beveled Wedge** - included with each unit, for easy downward slope installation.
- (5) **End Connection** - allows easy installation and no need for oversized hole cut in wall.
- (6) **Top Stamped** - on inlet end of wall faucet, indicates outlet direction on outside of building when making connection on inside.
- (7) **Chrome Plated** - for corrosion protection and better appearance for easy sales.

### WARNING:

**WARRANTY VOID** if not installed with downward pitch to prevent freezing



### NOTE:

All Wall Faucets are individually boxed  
Model "D" connection - 1/2" MIP and 1/2" Female Copper Sweat  
MIP= Male Iron Pipe  
FIP= Female Iron Pipe

### CODE

**APPROVALS**  
ASSE-1019A

CSA  
UPC  
E.A

### ANTI-SIPHON SELF-DRAINING

#### 1/4 Turn - Frost Proof Wall Faucet

Merrill's MA25 Series Frost Proof Wall Faucets provide frost proof water supply plus ANTI-SIPHON and SELF-DRAINING protection.

#### MAD25 Series Wall Faucets - Limited Qty. Available

Order No.	UPC Bar Code (Qty. 1)	Length	Approx. Wt./Lbs.	Ctn. Qty.	Approx. Ctn. Wt./Lbs.
-----------	-----------------------	--------	------------------	-----------	-----------------------

MAD2508 6 42367 12710 7 8" 1.4 20 28.0

#### MAP25 Series Wall Faucets - Limited Qty. Available

MAP2508 6 42367 12728 2 8" 1.4 20 28.0

MAP2512 6 42367 12730 5 12" 1.5 20 30.0

**No Parts Available - Buy New Faucet**

Complete Assembly

Ceramic Disk Shut Off



Open Close

### FEATURES/BENEFITS

- (1) **Adjustable Packing Nut** - with rubber packing.
- (2) **1/4 Turn Only** - full on to full off
- (3) **Ceramic Disk Shut Off** - for the longest life. More than double the life of rubber seat washers used by other companies
- (4) **End Connection** - allows easy installation and no need for oversized hole cut in wall.
- (5) **"UP" Stamped** - on inlet end of wall faucet, indicates outlet direction on outside of building when making connection on inside.
- (6) **Chrome Plated** - for corrosion protection and better appearance for easy sales.
- (7) **Anti-Siphon** - dual safety with air check at both nozzle and shut-off end connection.
- (8) **Automatic Self-Draining** - when shut off, wall faucet drains itself and open end hose due to air check above nozzle.

### NOTE:

All Wall Faucets are individually boxed  
Model "D" connection - 1/2" MIP and 1/2" Female Copper Sweat  
Model "P" connection - 1/2" PEX connection and 1/2" MIP  
MIP= Male Iron Pipe  
FIP= Female Iron Pipe

# CODE APPROVALS

ASSE-1019A

CSA

UPC

E.A

# MA SERIES

❖ CA. Certified

## ANTI-SIPHON SELF-DRAINING Frost Proof Wall Faucet

### MA Series Order Numbers

Order No.	UPC Bar Code (Qty. 1)	Length	Approx. Wt./Lbs.	Ctn. Qty.	Approx. Ctn. Wt./Lbs.
❖ MAD4	6 42367 09979 4	4"	1.2	24	29.0
❖ MAD6	6 42367 01788 0	6"	1.3	24	32.0
❖ MAD8	6 42367 01789 7	8"	1.4	24	34.0
❖ MAD10	6 42367 01784 2	10"	1.4	24	34.0
❖ MAD12	6 42367 01785 9	12"	1.5	24	36.0
❖ MAD14	6 42367 01787 3	14"	1.6	24	39.0
❖ MAT12	6 42367 03483 2	12"	1.6	24	39.0
❖ MADNL8	6 42367 12436 6	8"	1.4	24	34.0
❖ MADNL10	6 42367 12440 3	10"	1.4	24	34.0
❖ MADNL12	6 42367 12441 0	12"	1.5	24	36.0

All Wall Faucets are individually boxed

Model "D" end connection - 1/2" MIP and 1/2" Copper Sweat

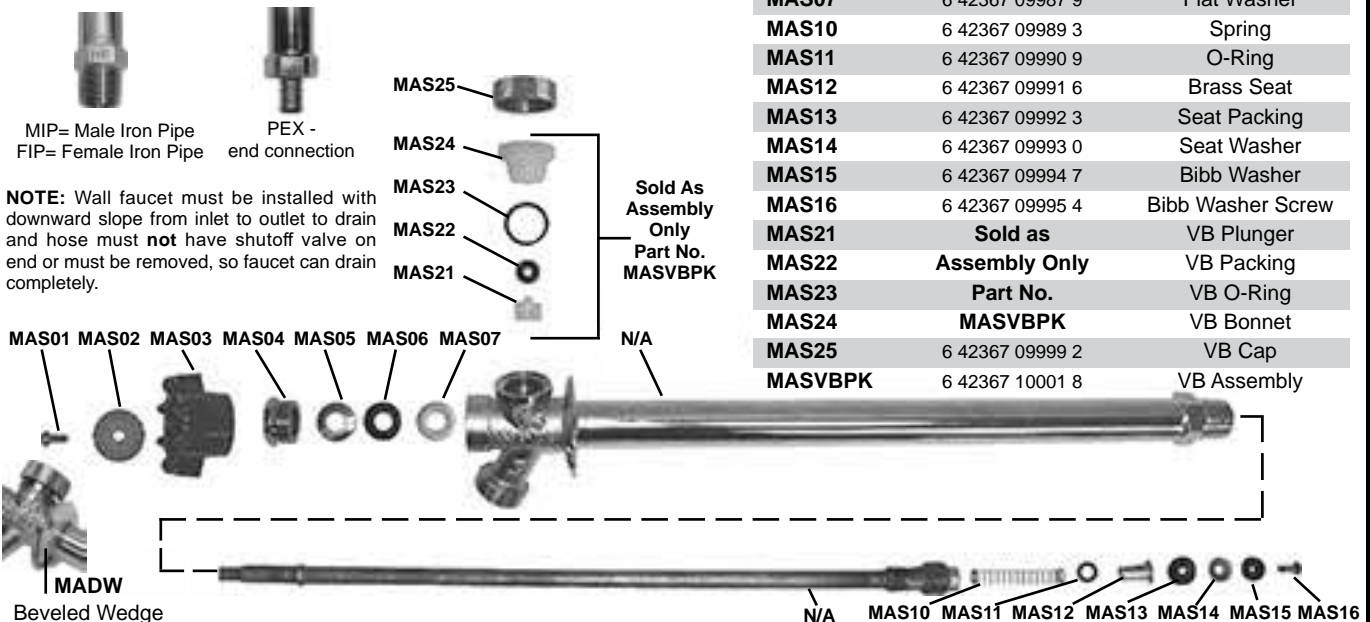
Model "T" end connection - 3/4" MIP and 1/2" FIP Double Thread

### MAP Series Order Numbers

Order No.	UPC Bar Code (Qty. 1)	Length	Approx. Wt./Lbs.	Ctn. Qty.	Approx. Ctn. Wt./Lbs.
❖ MAP6	6 42367 11851 8	6"	1.2	24	29.0
❖ MAP8	6 42367 11852 5	8"	1.3	24	31.0
❖ MAP10	6 42367 11853 2	10"	1.4	24	34.0
❖ MAP12	6 42367 11854 9	12"	1.5	24	36.0
❖ MAP14	6 42367 11855 6	14"	1.5	24	36.0
❖ MAPNL8	6 42367 12466 3	8"	1.3	24	31.0
❖ MAPNL10	6 42367 12467 0	10"	1.4	24	34.0
❖ MAPNL12	6 42367 12468 7	12"	1.5	24	36.0

All Wall Faucets are individually boxed

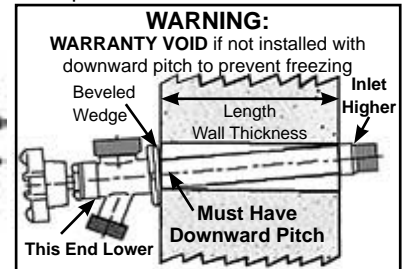
Model "P" end connection - PEX FITTING



Merrill MA Series of Frost Proof Wall Faucets provide frost proof water supply plus ANTI-SIPHON and SELF-DRAINING protection.

### FEATURES/BENEFITS

- (1) **ADJUSTABLE PACKING NUT** - with rubber packing, instead of asbestos packing used by other companies.
- (2) **METAL HANDLE** - for strength and long life.
- (3) **END CONNECTION** - allows easy installation and no need for oversized hole cut in wall.
- (4) **TOP STAMPED** - on inlet end of wall faucet, indicates outlet direction on outside of building when making connection on inside.
- (5) **CHROME PLATED** - for corrosion protection and better appearance for easy sales.
- (6) **ANTI-SIPHON** - dual safety with air check at both nozzle and shut-off end connection.
- (7) **AUTOMATIC SELF-DRAINING** - when shut off, wall faucet drains itself and open end hose due to air check above nozzle.



### MA Series Parts List

Part No.	UPC Bar Code (Qty. 1)	Description
MADW	6 42367 01790 3	Beveled Wedge
MAS01	6 42367 09980 0	Handle Screw
MAS02	6 42367 09981 7	Handle Washer
MAS03	6 42367 09982 4	Handle
MAS04	6 42367 09984 8	Bonnet Nut
MAS05	6 42367 09985 5	Packing Washer
MAS06	6 42367 09986 2	Packing
MAS07	6 42367 09987 9	Flat Washer
MAS10	6 42367 09989 3	Spring
MAS11	6 42367 09990 9	O-Ring
MAS12	6 42367 09991 6	Brass Seat
MAS13	6 42367 09992 3	Seat Packing
MAS14	6 42367 09993 0	Seat Washer
MAS15	6 42367 09994 7	Bibb Washer
MAS16	6 42367 09995 4	Bibb Washer Screw
MAS21	Sold as	VB Plunger
MAS22	Assembly Only	VB Packing
MAS23	Part No.	VB O-Ring
MAS24	MASVBPk	VB Bonnet
MAS25	6 42367 09999 2	VB Cap
MASVBPk	6 42367 10001 8	VB Assembly